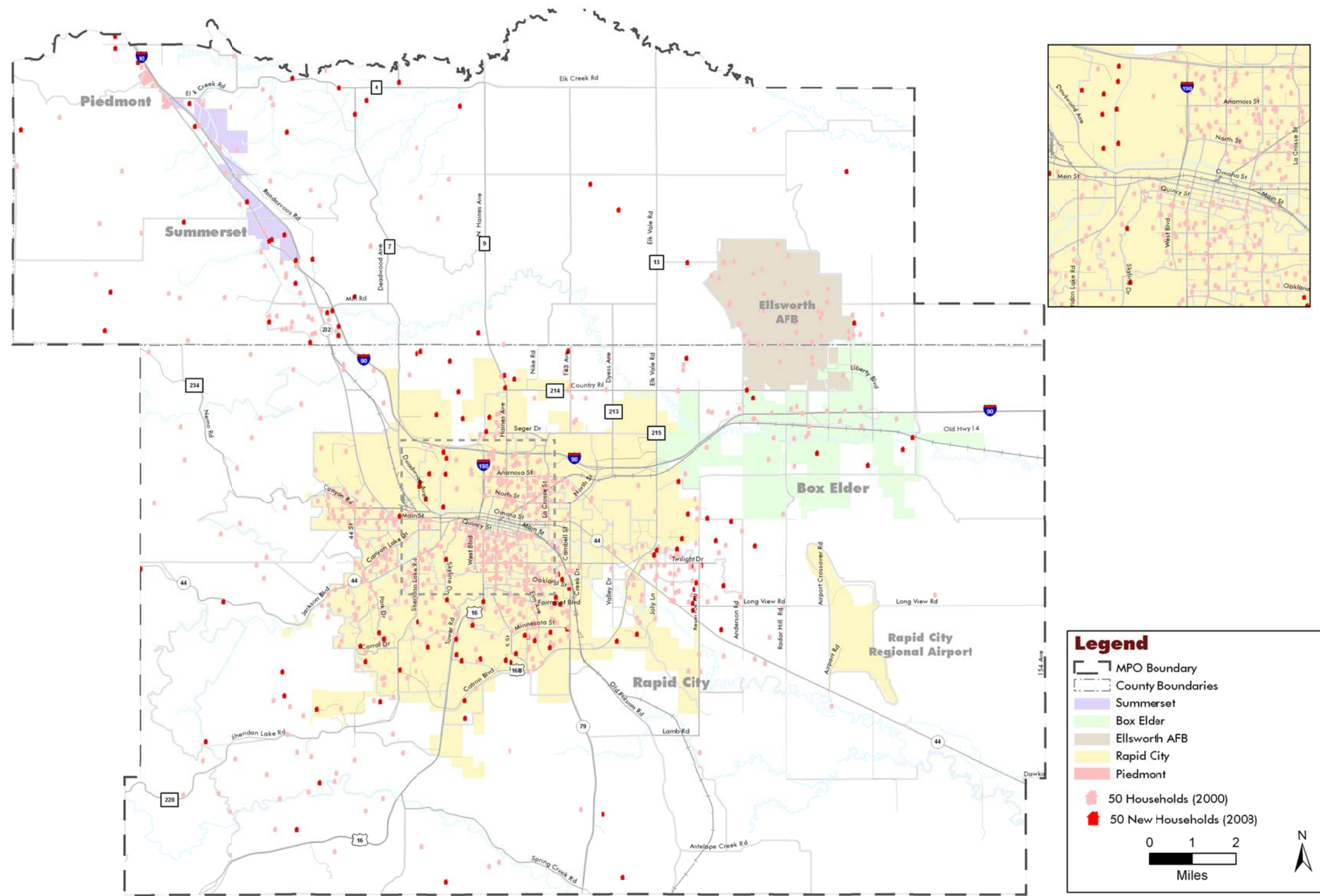




RapidTRIP 2035 - The Long Range Transportation Plan for the Rapid City Area

MAP APPENDIX

Figure 3-2: Residential Growth (2000 to 2008)



Legend

- MPO Boundary
- County Boundaries
- SummerSet
- Box Elder
- Ellsworth AFB
- Rapid City
- Piedmont
- 50 Households (2000)
- 50 New Households (2003)

0 1 2
Miles

N

Figure 3-3: Residential Growth (2008 to 2035)

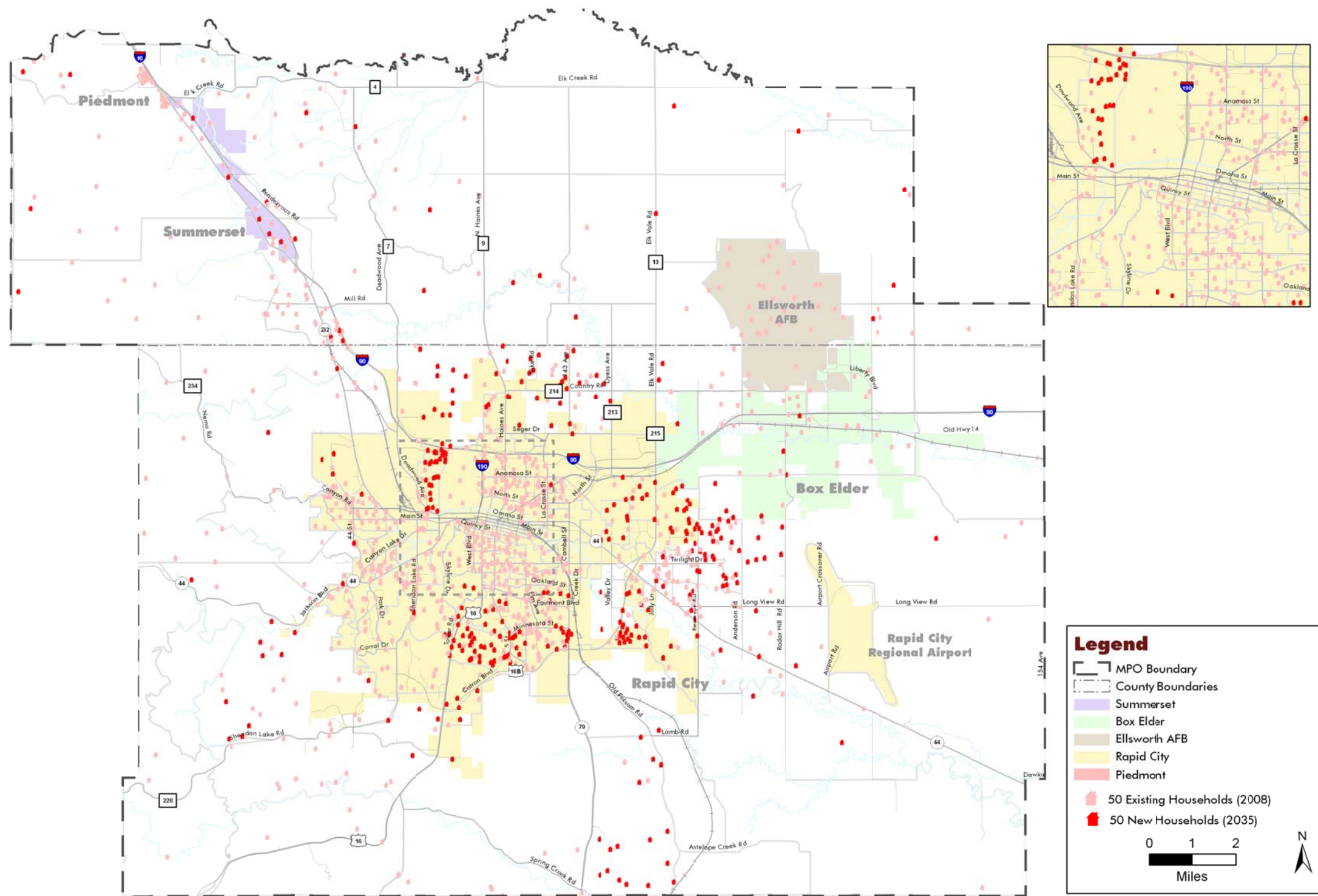
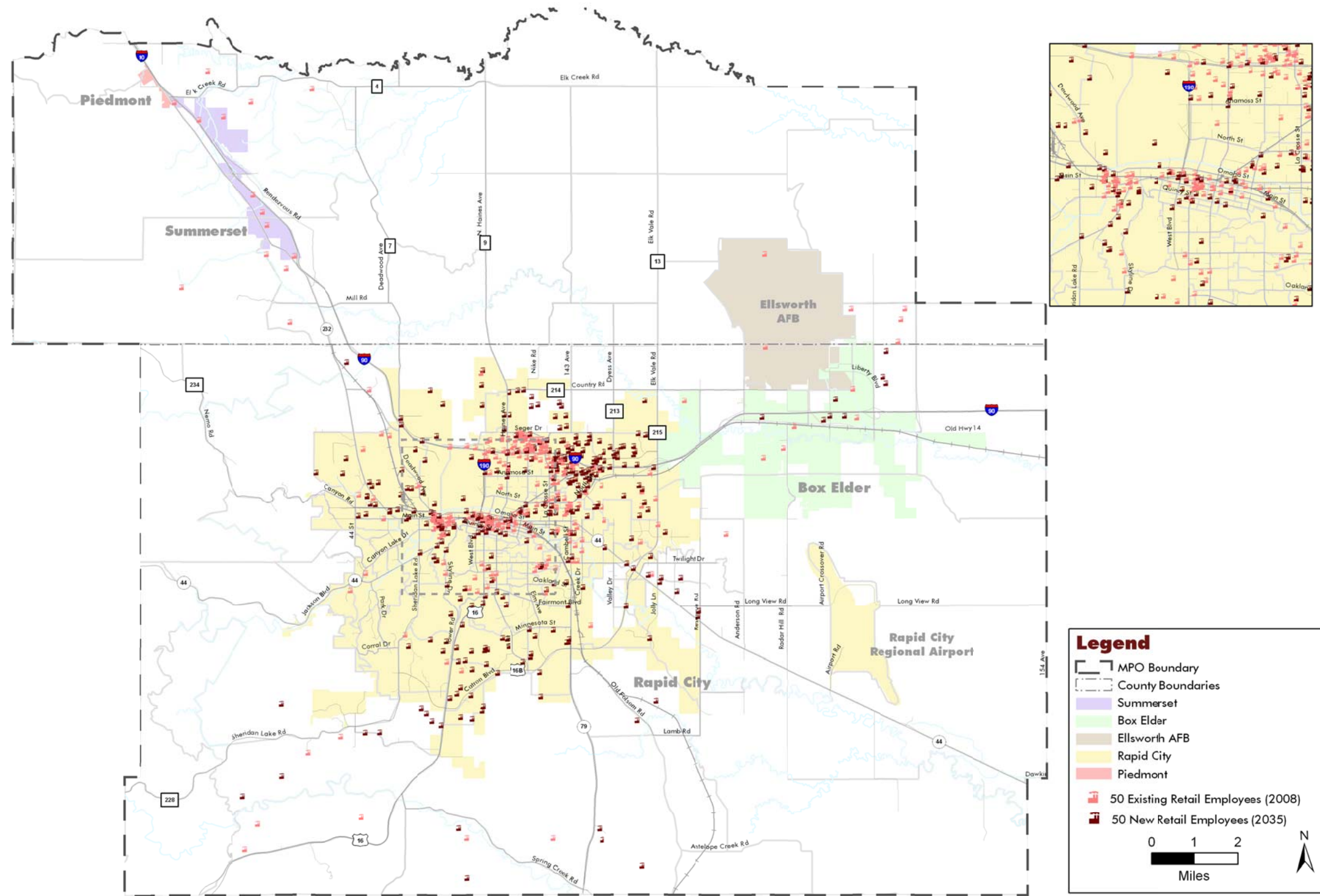


Figure 3-5: Retail Employment Growth



Legend

- MPO Boundary
- County Boundaries
- Summerset
- Box Elder
- Ellsworth AFB
- Rapid City
- Piedmont
- 50 Existing Retail Employees (2008)
- 50 New Retail Employees (2035)

0 1 2
Miles

N

Figure 3-6: Office/Service Employment Growth

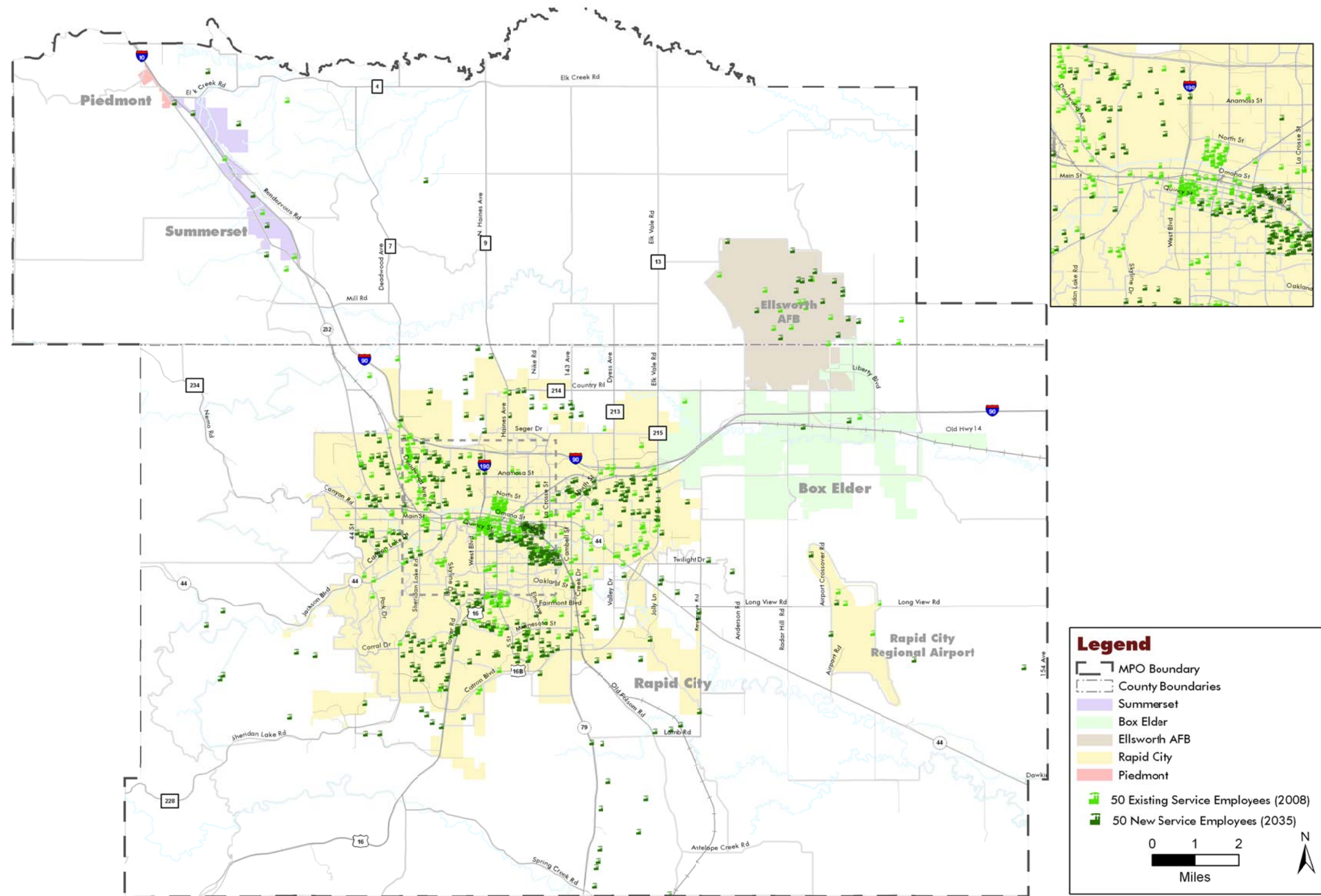


Figure 3-7: Industrial Employment Growth

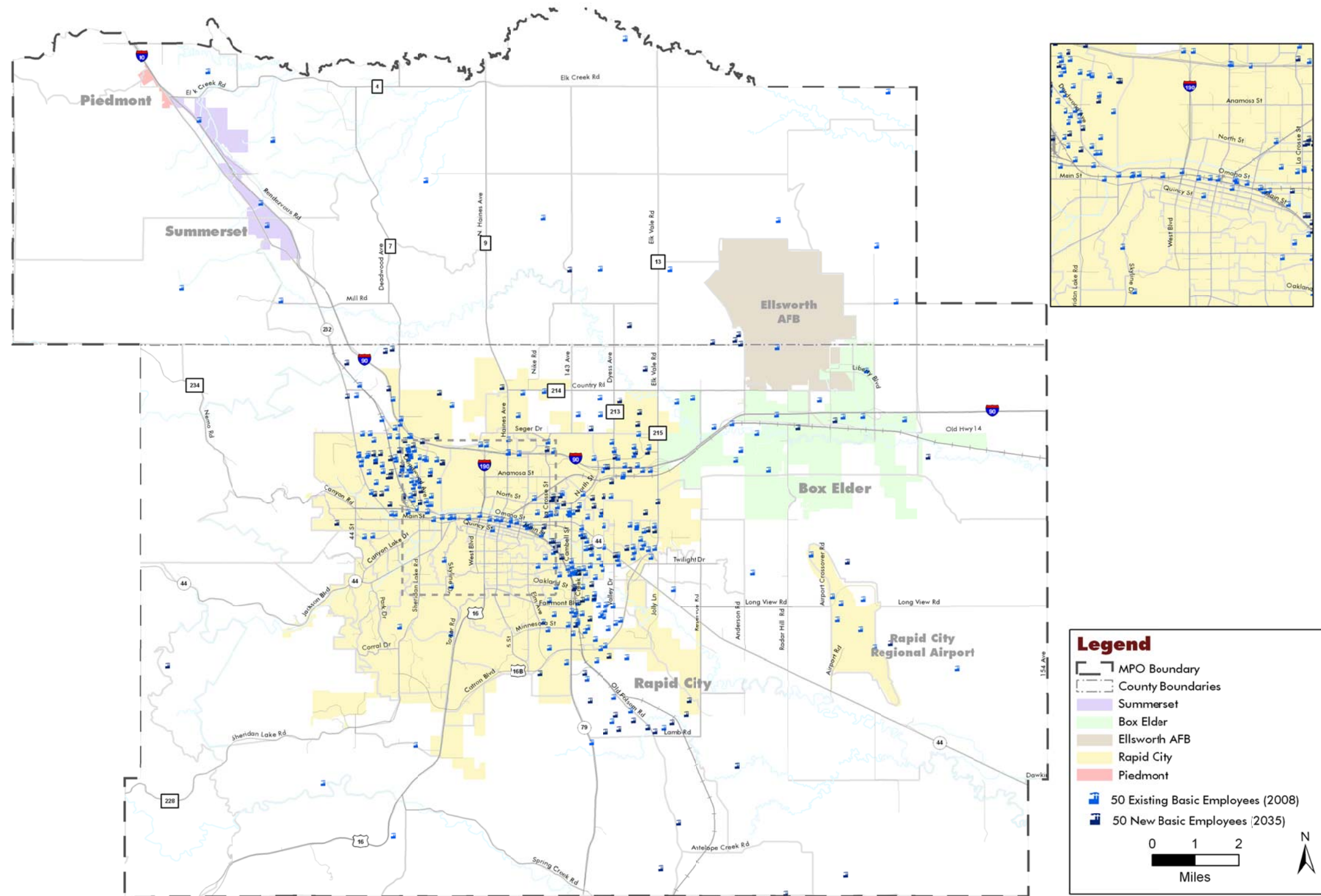


Figure 3-8: Public Sector Employment Growth

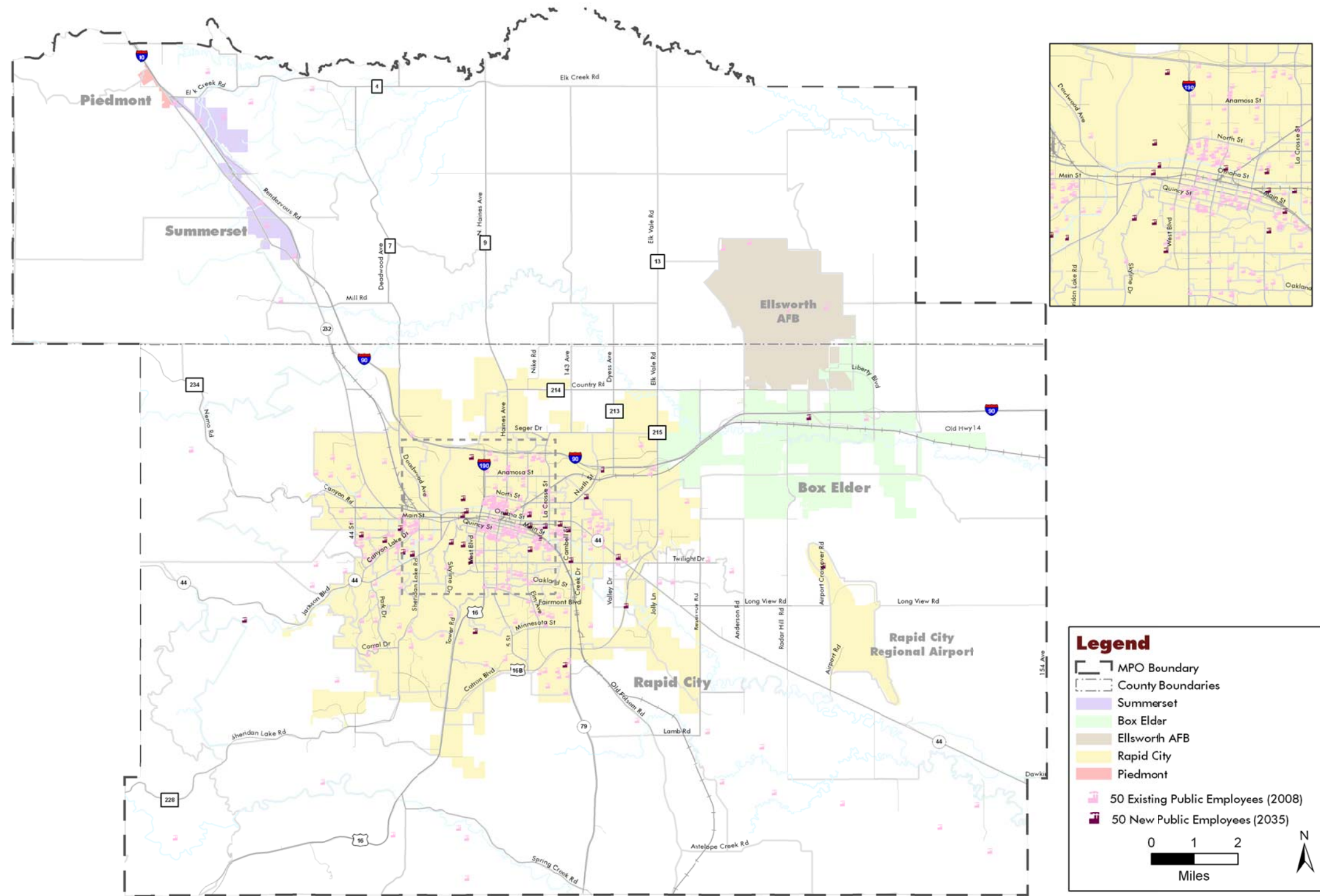


Figure 5-2: Bicycle Network Alternatives

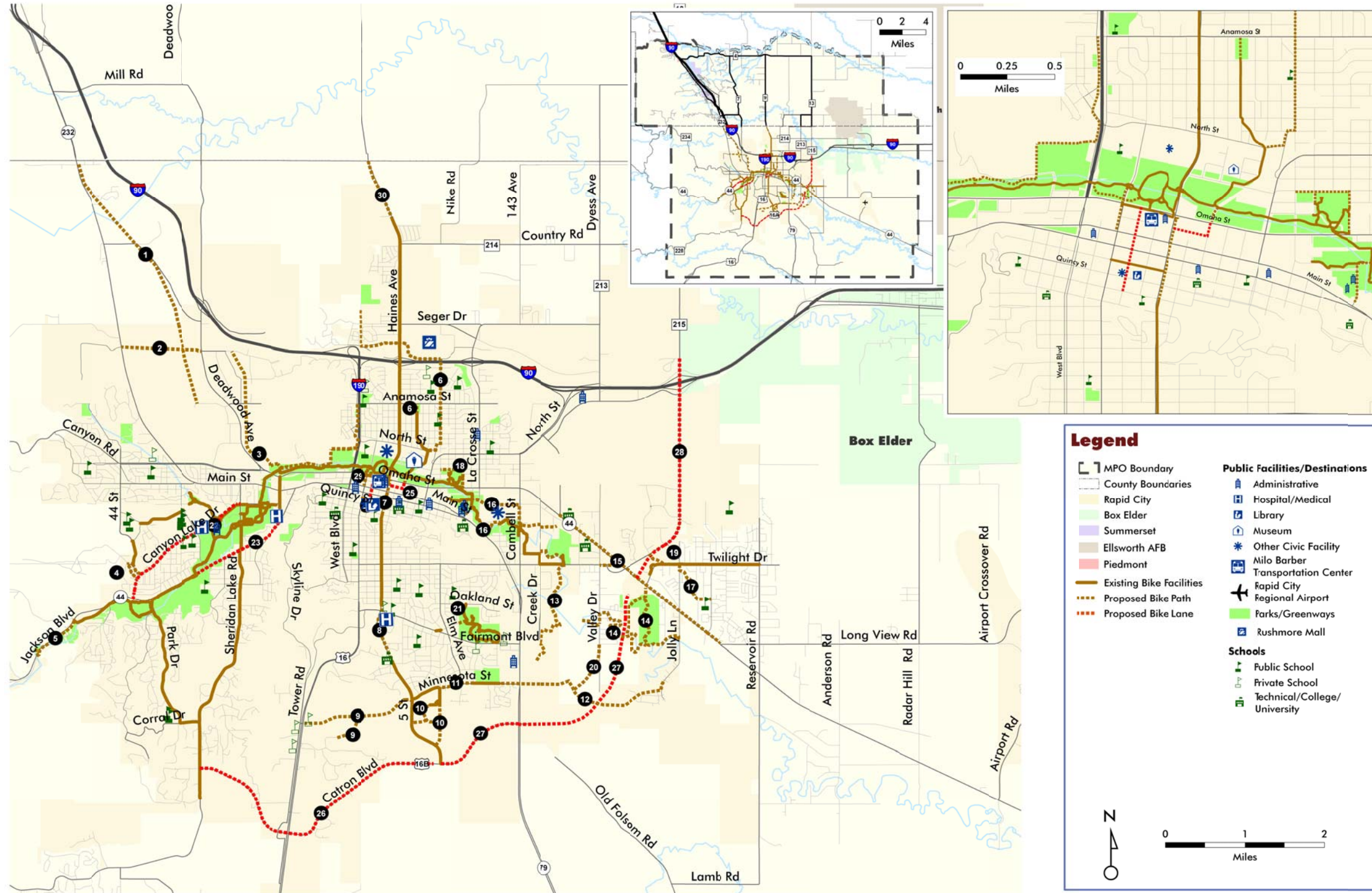


Figure 5-3: Financially-Constrained Non-Motorized Plan

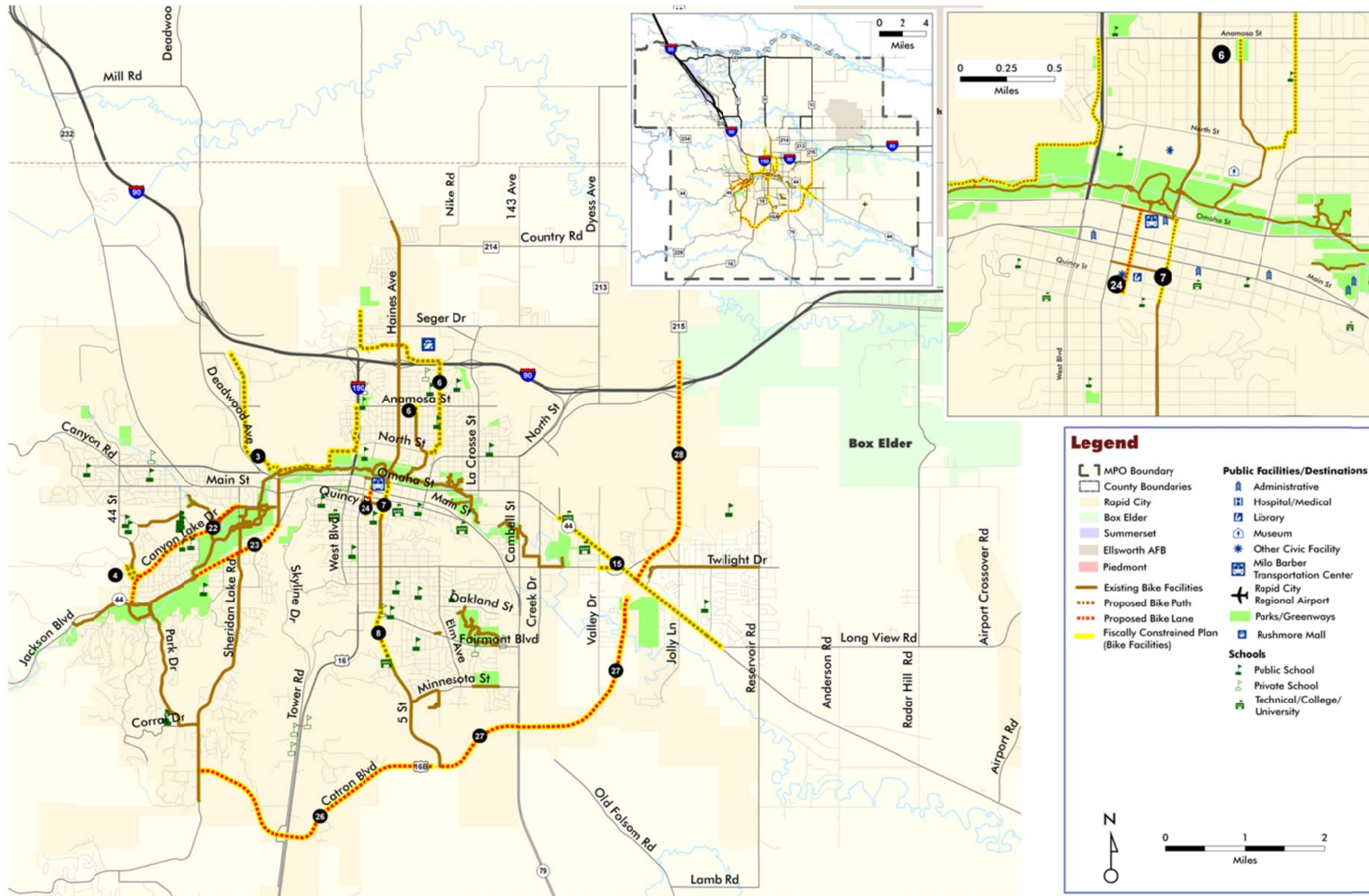


Figure 7-2: Existing and Committed Roadway Network

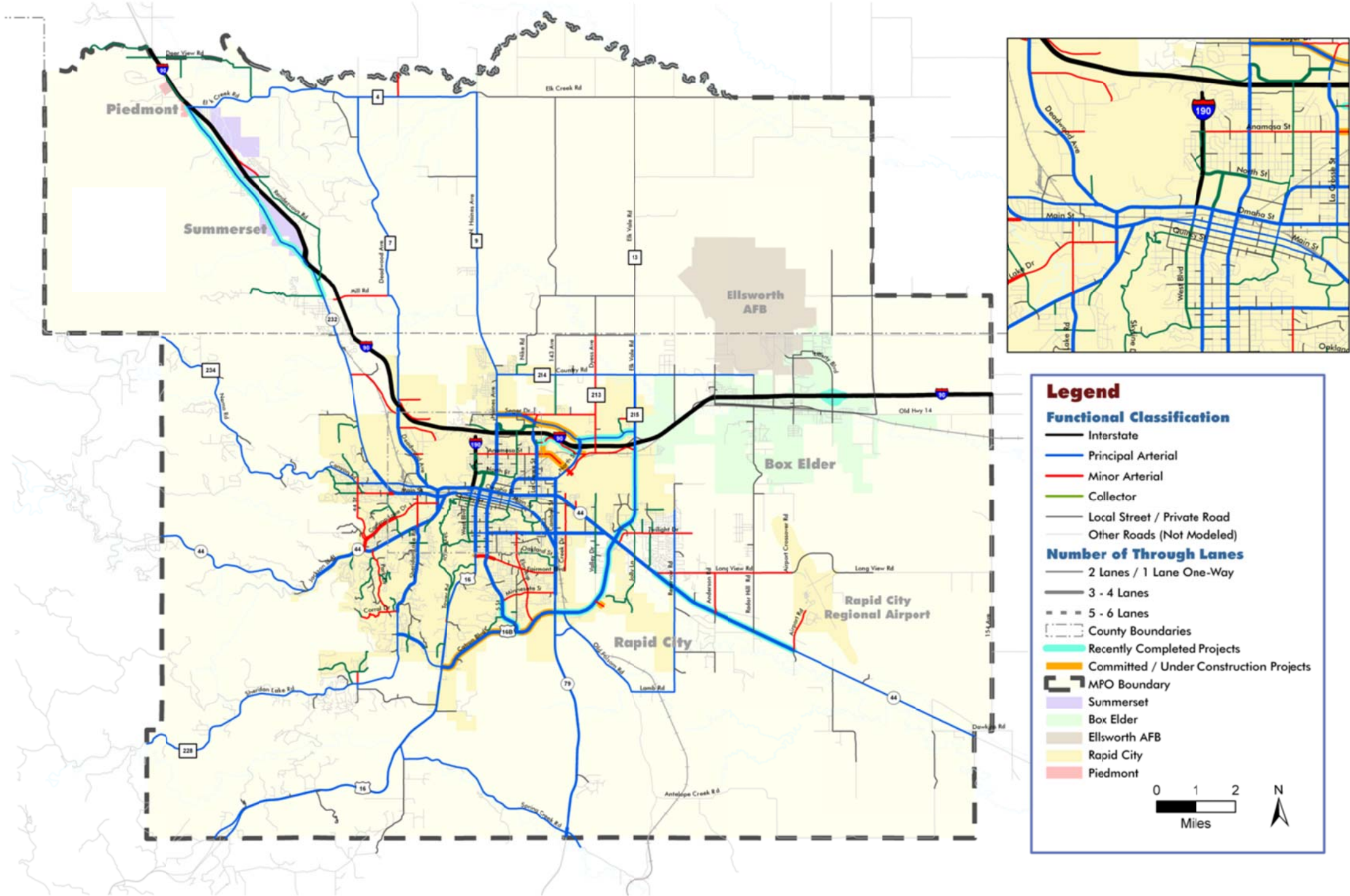


Figure 7-4: Roadway Alternatives

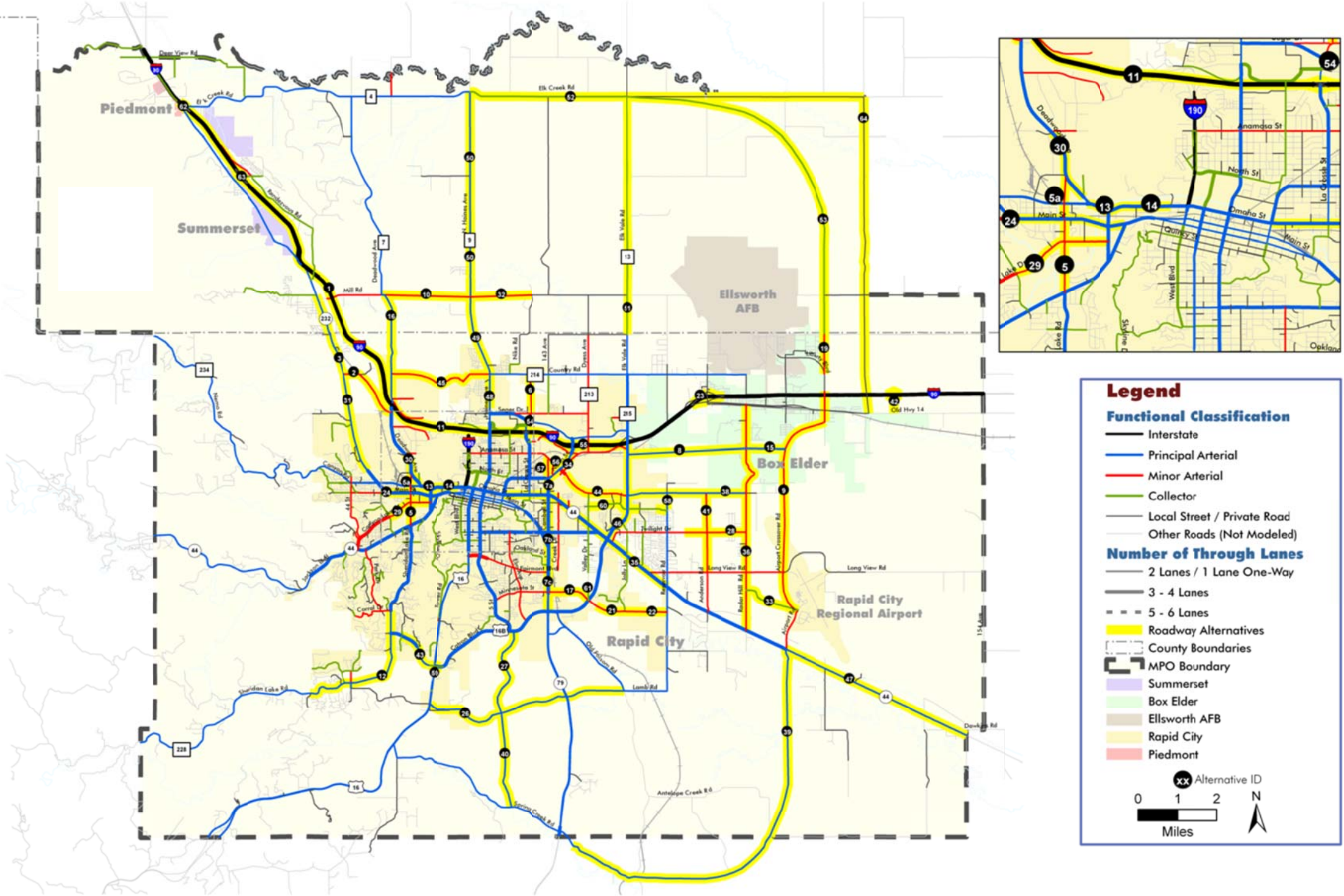


Figure 7-5: Recommended Financially Constrained Roadway Plan

